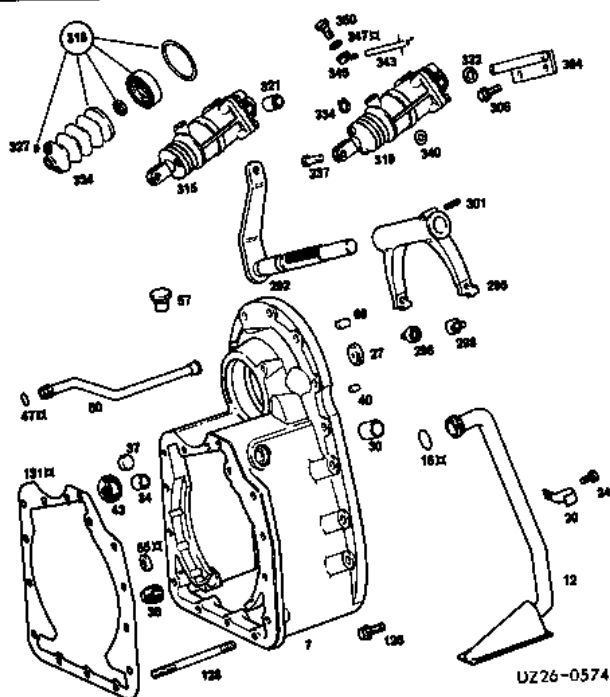


Setting values

Shift lever for planetary gearset – up	°	30
Adjustment a Shift cylinder (piston rod extended)	mm	245

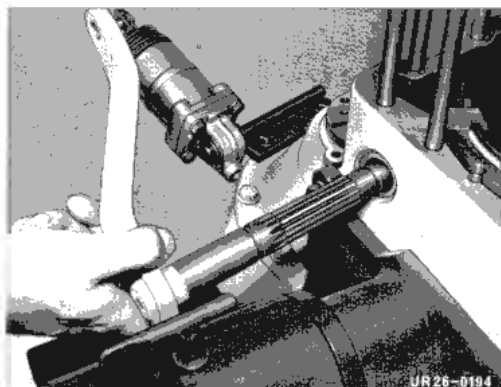
Expendable materials

Cons. No.	Designation	Part Number
3	Lubricant: long-term grease	000 989 63 51
4	Adhesive: Ciba adhesive „Araldite“ AV 138 (bonding agent)	001 989 96 71
5	Adhesive: Ciba adhesive „Araldite“ 138 (hardener)	001 989 97 71

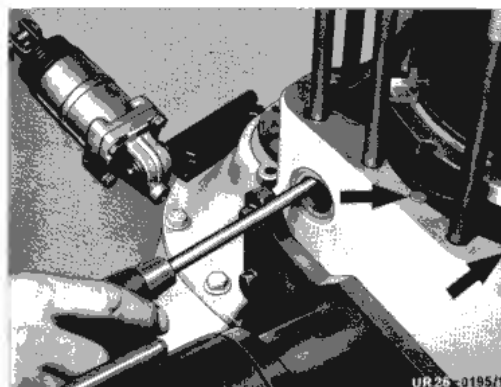
**x1 Removal**

- 26/157 1 Disassemble transfer case, see 5.1/1 (L 03).
- 26/158 2 Detach shift cylinder from shifter shaft.
- 26/159 3 Knock dowel pin on shift fork through to the inside.

26/160 4 Remove shifter shaft.

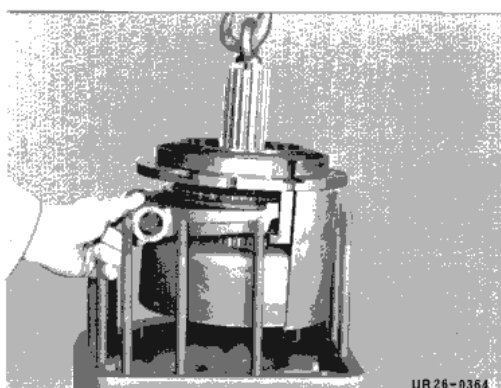


26/161 5 Raise shift fork during removal with screwdriver. Remove anti-torsion pins and knocked out dowel pin.



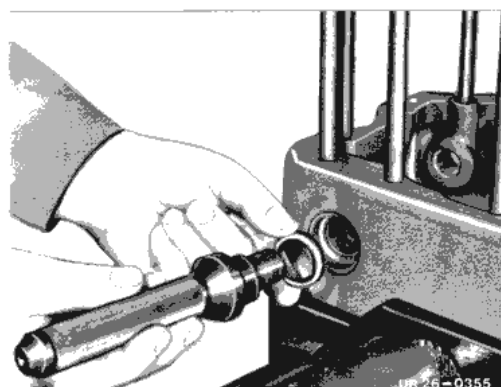
26/162 6 Remove planetary gearset with shift fork.

26/78 7 Remove shaft seal.



X2 Installation

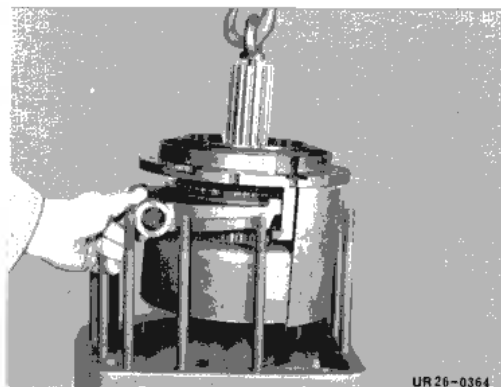
26/89 1 Coat shaft seal ring with lubricating grease no. 3 and press in.



26/165 **2** Install planetary train assy with shift fork.

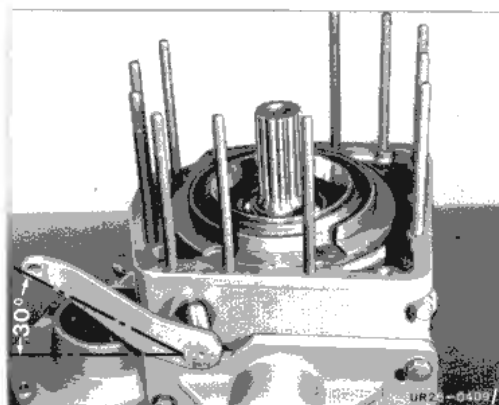
26H21 **Note:** Pay attention to oil baffle plate and bond in place if necessary with adhesives no. 4 and no. 5.

26/166 **3** Install antitorsion pins.



26/167 **4** Install shift lever pointing upwards approx. 30° from the horizontal, while shift fork is in center position.

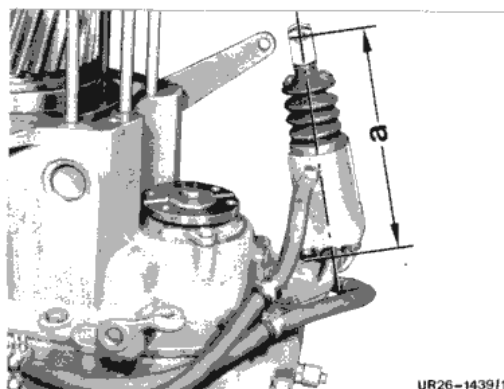
26/168 **5** Install dowel pin in shift lever.



26/1034 **6** Adjusting shift cylinder.
Adjustment, 245 mm.

26G20 **Adjusting instructions**

- 26/170
- Move piston rod up to stop by pulling.
 - Adjust reference size by turning the clevis.
 - Secure adjusted clevis with nut.
 - Fit pleated bellows on clevis.



26/171 **7** Attach shift lever to shift cylinder.

26H23 **Note:** When the shift cylinder is retracted, the fast group is disengaged.

